

mix it up with color!

If you've ever wondered which colors look best together, the Color Coach® has been there to help. But what about Stampin' Up!'s In Colors™? These six trendy colors expand your color options and complement our exclusive color families too! Use this chart to help you mix and match In Colors with Bold Brights®, Earth Elements®, Rich Regals®, Soft Subtles®, and Neutrals, and find the perfect color combination every time!

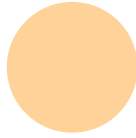




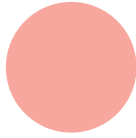
wild wasabi



chocolate chip



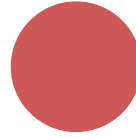
apricot appeal



cameo coral



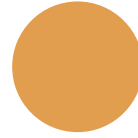
soft sky



ruby red



wild wasabi



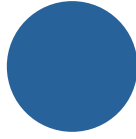
more mustard



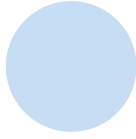
wild wasabi



pumpkin pie



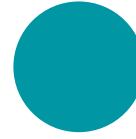
brilliant blue



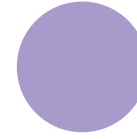
bashful blue



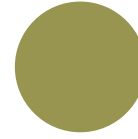
soft sky



taken with teal



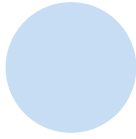
lavender lace



old olive



wild wasabi



bashful blue



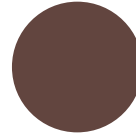
real red



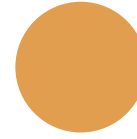
pumpkin pie



soft sky



chocolate chip



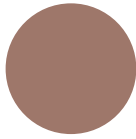
more mustard



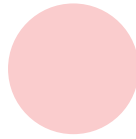
always artichoke



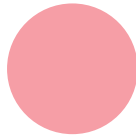
wild wasabi



close to cocoa



pretty in pink



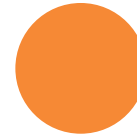
regal rose



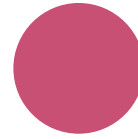
soft sky



wild wasabi



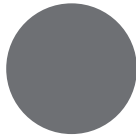
pumpkin pie



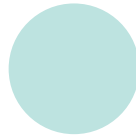
rose red



wild wasabi



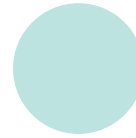
basic gray



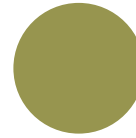
soft sky



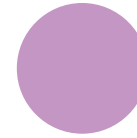
ruby red



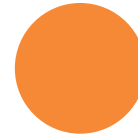
soft sky



old olive



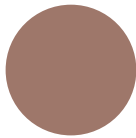
orchid opulence



pumpkin pie



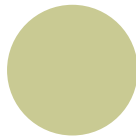
wild wasabi



close to cocoa



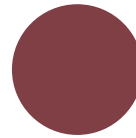
river rock



certainly celery



soft sky



bravo burgundy



always artichoke

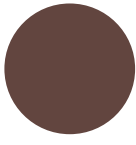


kraft





blue bayou



chocolate chip



river rock



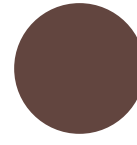
ruby red



blue bayou



certainly celery



chocolate chip



soft sky



blue bayou



bravo burgundy



mellow moss



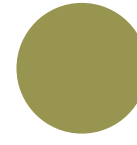
kraft



blue bayou



rose red



old olive



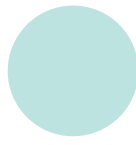
sahara sand



blue bayou



wild wasabi



soft sky



certainly celery



river rock



so saffron



night of navy



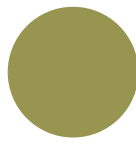
real red



blue bayou



river rock



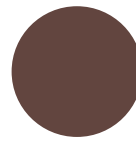
old olive



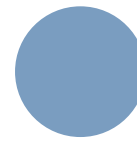
purely pomegranate



river rock



chocolate chip



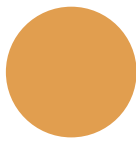
brocade blue



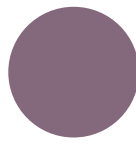
always artichoke



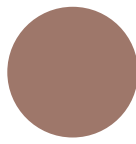
blue bayou



more mustard



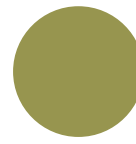
perfect plum



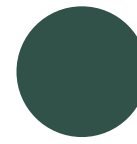
close to cocoa



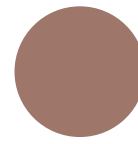
river rock



old olive



handsome hunter



close to cocoa



blue bayou



real red



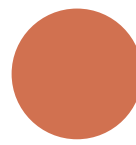
so saffron



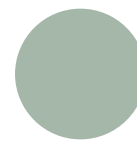
wild wasabi



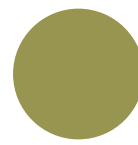
river rock



really rust



sage shadow



old olive



river
rock



soft
sky



rose
red



chocolate
chip



river
rock



chocolate
chip



pumpkin
pie



always
artichoke



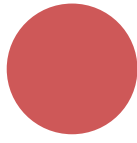
river
rock



mellow
moss



basic
gray



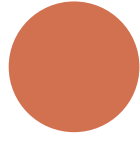
ruby
red



river
rock



blue
bayou



really
rust



kraft