

From the Crypt Coffin Treat Box
Created by Janine Tinklenberg
©2009
<http://jantink.com>

1. Print template on second page right onto cardstock or print out on bond paper, cut out and trace onto cardstock.

2. Cut on all solid lines, score on all dashed lines.

3. Trim tabs at an angle from top corners before assembly for smoother fit.

4. Fold on all score lines, with printing on inside of coffin.

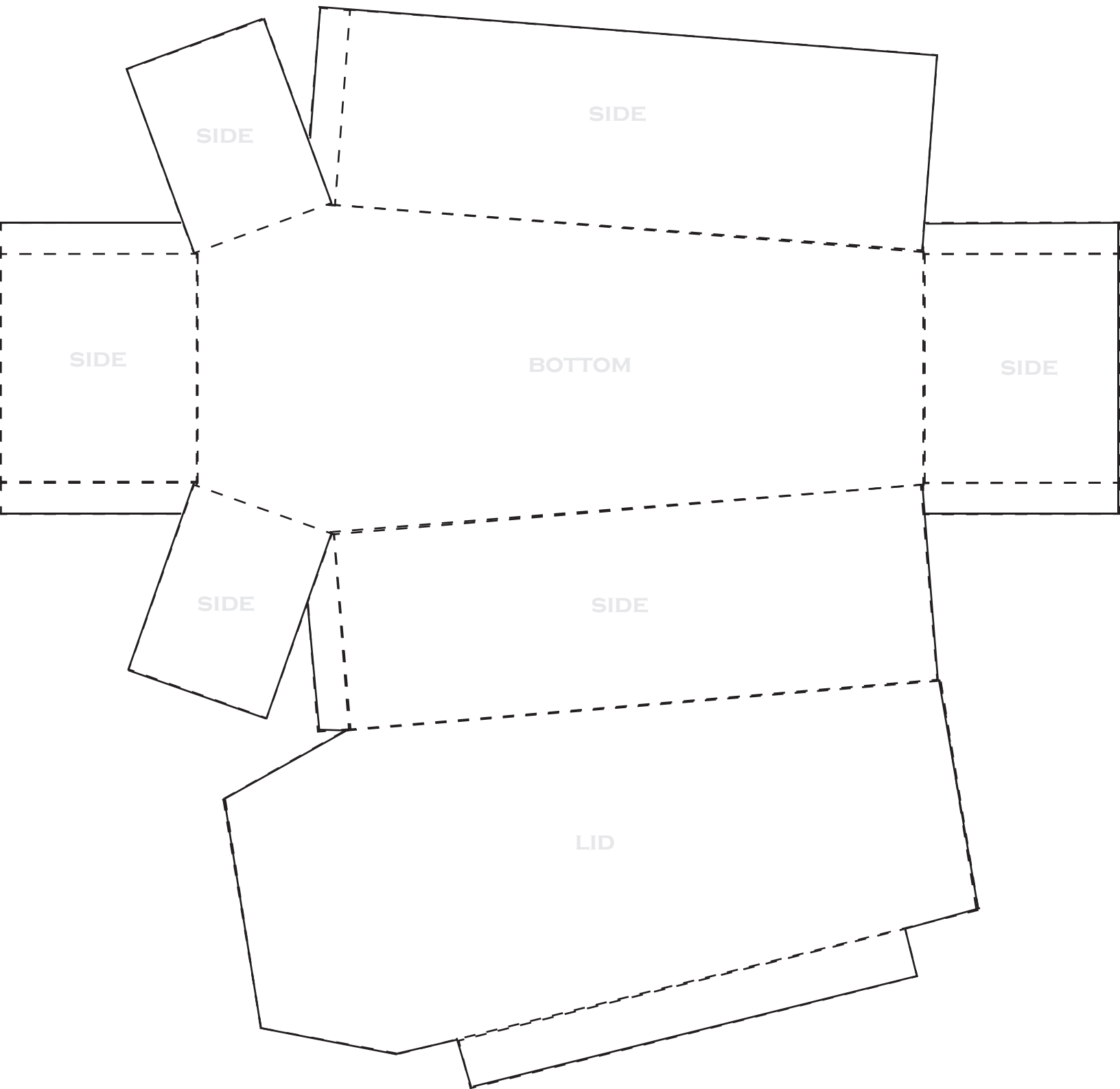
5. Use a strong adhesive such as Sticky Strip to adhere tabs to the inside of side pieces.

6. Cut a strip of cardstock the same color as the coffin, 3/4" x 4 1/2". Adhere to inside of right side even with the top of the box, only placing adhesive on 1/2" of ends of strip.

6. To close coffin, slide tab on lid between side of coffin and the strip you just adhered.

7. Decorate as desired.





From the Crypt Coffin Treat Box
Created by Janine Tinklenberg ©2009

Cut on all solid lines, score on all dashed lines.
Trim tabs at an angle from top corners before assembling for
smoother fit.